



Single Sided ID CARD PRINTER

# SMART-51S

SMART 51 Series *is Value for Everyone!*



- Single Sided Mid- Range ID Card Printer
- Fast, Quiet with User Friendly LCD
- Flexible, Upgradeable & Reliable
- FINE™ Imaging Technology
- Lowest Cost per Print
- 3 YEAR WARRANTY



## SMALL TO MID-SIZED BUSINESS SOLUTION FOR RELIABLE SIMPLEX ID CARDS!

IDP's SMART-51S printer will produce full-color or monochrome cards reliably for years. Its time-test design provides high-speed printing, excellent image reproduction and cost savings.

The SMART-51S offers a wide range of optional features including Ethernet, smartcard encoding, and field upgradeable dual and lamination modules.

### For Dual Sided Printing of ID Cards

- Employee ID Cards
- Student ID Cards
- Payment Cards
- Health Cards
- Leisure Resort Pass Cards
- Identification Cards
- Transport Pass Cards
- Loyalty Cards
- Event Cards

### FEATURES

- Color & Mono Single Side Printing
- Print Speed: Max. 17 sec/card (YMCKO)
- 300dpi with Edge to Edge Printing
- 2 Lines LCD with 2 LED Buttons for Front Operation
- Support of Transparent Cards
- Low Cost Security with UV Printing
- Installable Encoders: MS, Contact & Contactless
- Upgradable Modules: Flipper, Laminator & Ethernet



### ISSUANCE

SMART ID ensures accurate card issuance and data management with your SMART series of printers. This application offers simple design tools to allow the user to create a truly customized card within minutes. SMART ID offers advanced user tools such as database connections, camera and signature scanners plug-in support, as well as smart card reading and encoding.

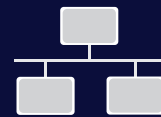
- Design and print (Image, Photo and Text)
- 1D & 2D Barcode printing
- Auto portrait (Auto face detection, adjustment of size & position)
- Printing of sequential numbers
- Card design templates
- Plug-in for supporting external devices (Sign pad, Camera, Scanner)
- Convenient card issuance and data management
- Magnetic stripe (MS), contact & contactless smart card encoding by using plug-in program



### SECURITY

The SMART series printers come with highly effective and tested physical and electronic security features.

- PASSWORD verification with administrator and user authentications
- PC AUTHENTICATION locks the SMART printer to a specific PC to render it useless if stolen
- DATA ENCRYPTION over USB and SSL (secure socket layer) over Ethernet
- PHYSICAL LOCKS are standard on the SMART-70 and an optional feature on the SMART-51 Series




### NETWORKING


The SMART series offers "single-wire" printing and encoding.

- The SMART Ethernet module can not only print over your network, but can also be configured to encode magnetic stripes, contact IC chips and contactless smart cards over your network
- The SMART Ethernet module can be configured to accept "open card protocol" print commands for direct printing without a driver

**Specifications**

| PRINTING              |  | SYSTEM   |  |
|-----------------------|--|--|--|
| • Print Type          | Dye-Sublimation  | • Memory   | 64MB RAM   |
| • Print Area          | Edge to Edge   | • Display  | 2 Line LCD   |
| • Resolution          | 300dpi   | • Control Panel  | 2 LED Buttons  |
| • Dual Sided Printing | Option (with Flipper)  | • Supported Platforms  | Microsoft Windows 7/8/10, Mac OS, Linux                    |
| <b>CARD</b>           |  | • Communication  | USB, Ethernet (Option)                                     |
| • Card Feeding        | Automatic  | • Power Supply   | Free Voltage (AC100/220V, 50~60Hz)                         |
| • Card Size           | ISO CR80 or ISO CR79 (Option-Factory Installed)                  | • Power Consumption  | 48W  |
| • Card Thickness      | 0.38mm (15mil), 1.0mm (40mil)                                    | • Temperature/Humidity   | 15~35°C/35~70%   |
| • Card Type           | PVC, PET, Composite PVC  | <b>DIMENSIONS</b>  |  |
| <b>PRINT SPEED</b>    |  | • Millimeter (WxLxH)   | 165 x 390 x 210  |
| • Monochrome          | 5 sec./card (720 cards/hour)                                     | • Inch (WxLxH)   | 6.5 x 15.4 x 8.3   |
| • YMCKO               | Max. 17 sec./card (200 cards/hour)                               | <b>WEIGHT</b>  |  |
| <b>CAPACITY</b>       |  | • Kg/lbs   | 4.5/10   |
| • Input Hopper        | 100 / 200 cards with cover open                                  | <b>ENCODING OPTIONS</b>  |  |
| • Output Hopper       | Front: 40 cards / Rear: 100 Cards<br>*Optional Rear-Side Stacker | • Magnetic   | ISO7811 (Track I, II, III Read/Write, HiCo/LoCo), JIS II   |
|                       |  | • Contact  | ISO 7816 (ID-1)  |
|                       |  | • Contactless  | MIFARE, ISO 14443 (Type A/B), ISO 15693<br>DESFIRE, iCLASS |
| <b>CERTIFICATIONS</b> |  |  |  |

**Consumables**

| COLOR RIBBONS |  | 659366<br>YMCKO  |   | 659380<br>YMCFKO |                | 659378<br>HYMCKO |                 |  |                |                 |                 |                 |                 |                 |                 |                 |                 |
|---------------|--|--|---|------------------|----------------|------------------|-----------------|--|----------------|-----------------|-----------------|-----------------|-----------------|-----------------|-----------------|-----------------|-----------------|
|               | Full Color Ribbon with Resin Black & Overlay | Full Color Ribbon with UV Panel, Resin Black and Overlay | Half Panel Size Color Ribbon with Resin Black and Overlay | 250 Cards/Roll   | 200 Cards/Roll | 350 Cards/Roll   |                 |  |                |                 |                 |                 |                 |                 |                 |                 |                 |
| MONO RIBBONS  |  | 659385<br>KO   |   | 659367<br>K      |                | 659370<br>W      |                 | 659372<br>B  |                | 659371<br>R     |                 | 659374<br>MG    |                 | 659373<br>MS    |                 | 659375<br>SO    |                 |
|               | Black with Overlay                           | Black  | White   | Blue             | Red            | Metallic Gold    | Metallic Silver | Scratch-Off  | 600 Cards/Roll | 1200 Cards/Roll | 1200 Cards/Roll | 1200 Cards/Roll | 1200 Cards/Roll | 1200 Cards/Roll | 1200 Cards/Roll | 1200 Cards/Roll | 1200 Cards/Roll |

Specifications and availability may change without notice.

**Part Numbers:**

|                  |        |
|------------------|--------|
| SMART-51S        | 651398 |
| SMART-51SN (Eth) | 651404 |

|                        |        |
|------------------------|--------|
| Contactless Enc. (USB) | 651360 |
| Contactless Enc. (Eth) | 651362 |
| Contact IC Enc.        | 651359 |
| Mag Encoding           | 651356 |

Add "K" to any printer part number for a kit (1 YMCKO Ribbon, 1-100pk Cards, & 1 Long Cleaning Card)

**IDP Corp., Ltd.**

OFFICE: Room 601m 50, Digital-ro 33-gil, Guro-gu, Seoul, 152-742, Korea  
 TEL: +82-2-6099-3700  
 FAX: +82-2-6099-3717  
 E-MAIL: sales@idp-corp.com

**IDP Americas, Inc.**

OFFICE: 200 Circuit Drive, North Kingstown, RI 02852  
 TEL: +1-401-400-7111  
 FAX: +1-401-667-7445  
 EMAIL: sales.na@idp-corp.com